



Shower - Tara.
Volume Control - polished chrome
Article number: 36 310 892-00

- Flange diameter 2-1/8"
- (ADA)



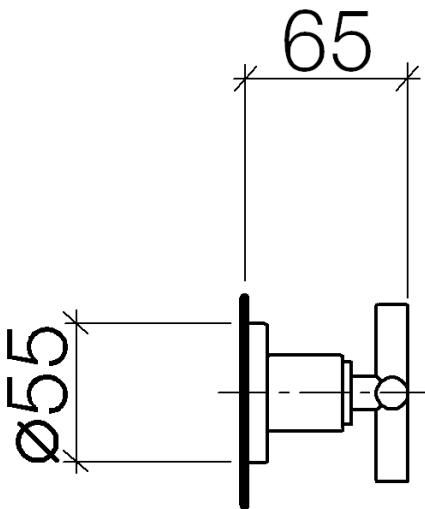
polished chrome



Accessory is required for this item.

Discontinued items available to order until 30.06.2020

Dimensional drawing



All dimensions in mm / inch = mm x 0,0394



Shower - Tara.

Volume Control - polished chrome

Article number: 36 310 892-00



Shower - Tara.
Volume Control - polished chrome
Article number: 36 310 892-00

Other surface finishes



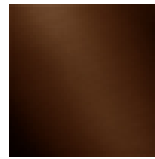
platinum matte
36 310 892-06



platinum
36 310 892-08



Dark Brass matte
36 310 892-16



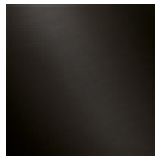
Dark Bronze matte
36 310 892-17



black matte
36 310 892-33



Cyprum
36 310 892-49



Dark Platinum matte
36 310 892-99

More custom finish options are available via special production (xTra Service). Please see our finish matrix for availability and pricing or contact a Dornbracht representative.

Required article



35 621 970-90 0010
Rough for volume control
clockwise-closing 1/2" -

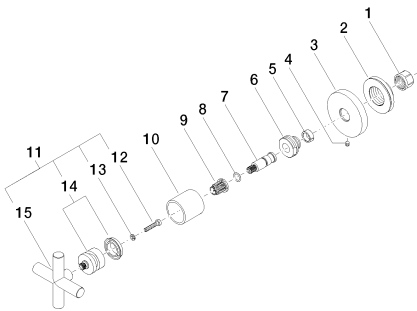


35 622 970-90 0010
Rough for volume control
clockwise-closing 3/4" -



Shower - Tara.
Volume Control - polished chrome
Article number: 36 310 892-00

Spare parts list



Number	Item Number	Designation	Number of units
--------	-------------	-------------	-----------------